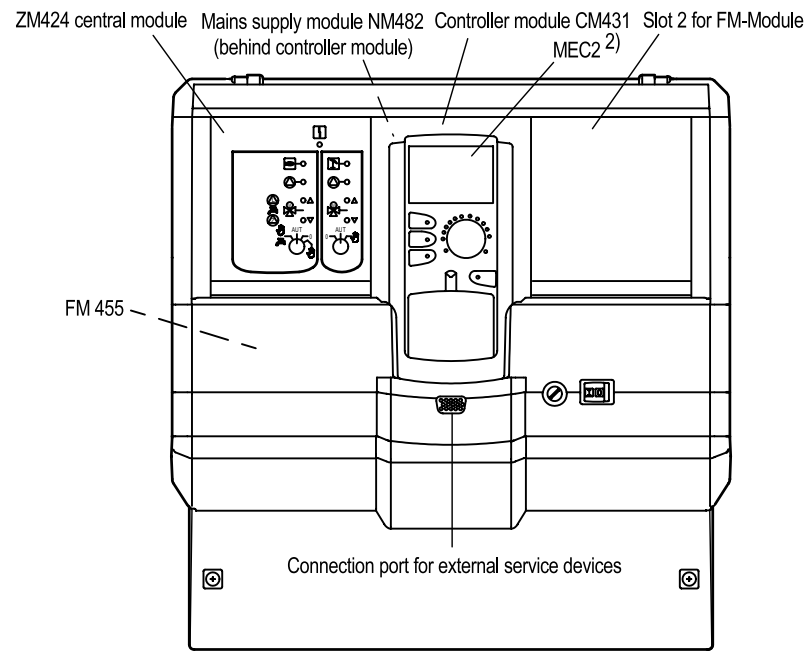


**Note!**

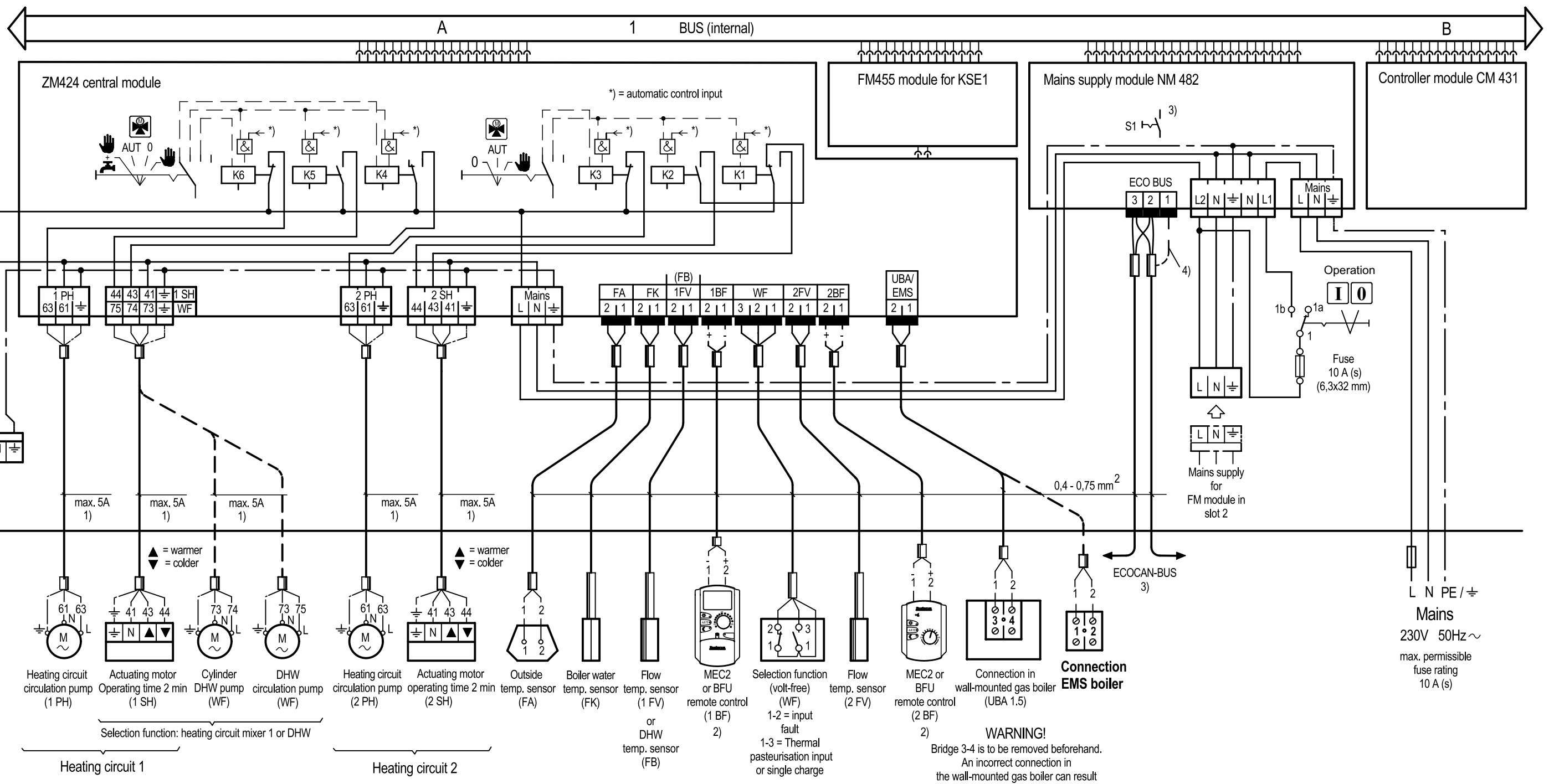
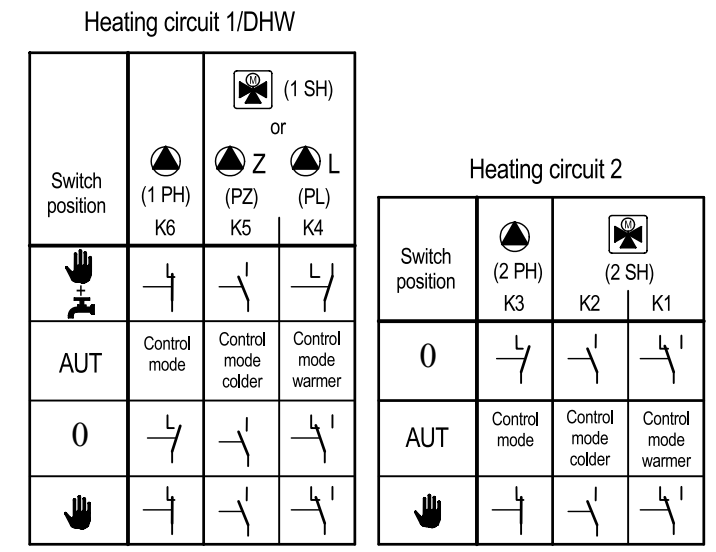
Implement the installation, fuse protection, mains isolator, emergency stop switches and protective measures in accordance with local/national regulations.

**Warning!** Earth ye-gn must not be used as a control line.

- 1) The total current must not exceed 10A.  
Recommended connecting leads H05VV-F3G 1.0 mm<sup>2</sup> or H05VV-F4G 1.0 mm<sup>2</sup>.
- 2) **Warning!** Only allocate one MEC 2 per control device.  
The MEC2 can either be inserted in the controller module or connected to one of the ZM or FM modules using the room mounting kit (accessory).
- 3) If a number of ECOCAN-BUS components are connected, the S1 switches (terminating resistor) on the NM 482 on the nodes at the two ends of the ECOCAN bus must be closed.
- 4) A screen is not required for standard applications. (Terminate the screen at one end only)



**Switch states**



**WARNING!**  
Bridge 3-4 is to be removed beforehand.  
An incorrect connection in the wall-mounted gas boiler can result in damage to the appliances.  
Always check the connection in the UBA.

Selection function: heating circuit mixer 1 or DHW

Heating circuit 1

Heating circuit 2

Heating circuit circulation pump (1 PH)  
Actuating motor Operating time 2 min (1 SH)  
Cylinder DHW pump (WF)  
DHW circulation pump (WF)

Heating circuit circulation pump (2 PH)  
Actuating motor operating time 2 min (2 SH)

Outside temp. sensor (FA)  
Boiler water temp. sensor (FK)  
Flow temp. sensor (1 FV)  
MEC2 or BFU remote control (1 BF)  
Selection function (volt-free) (WF)  
Flow temp. sensor (2 FV)  
MEC2 or BFU remote control (2 BF)

Connection in wall-mounted gas boiler (UBA 1.5)  
Connection EMS boiler

max. 5A 1) max. 5A 1) max. 5A 1) max. 5A 1) max. 5A 1)

▲ = warmer  
▼ = colder

▲ = warmer  
▼ = colder

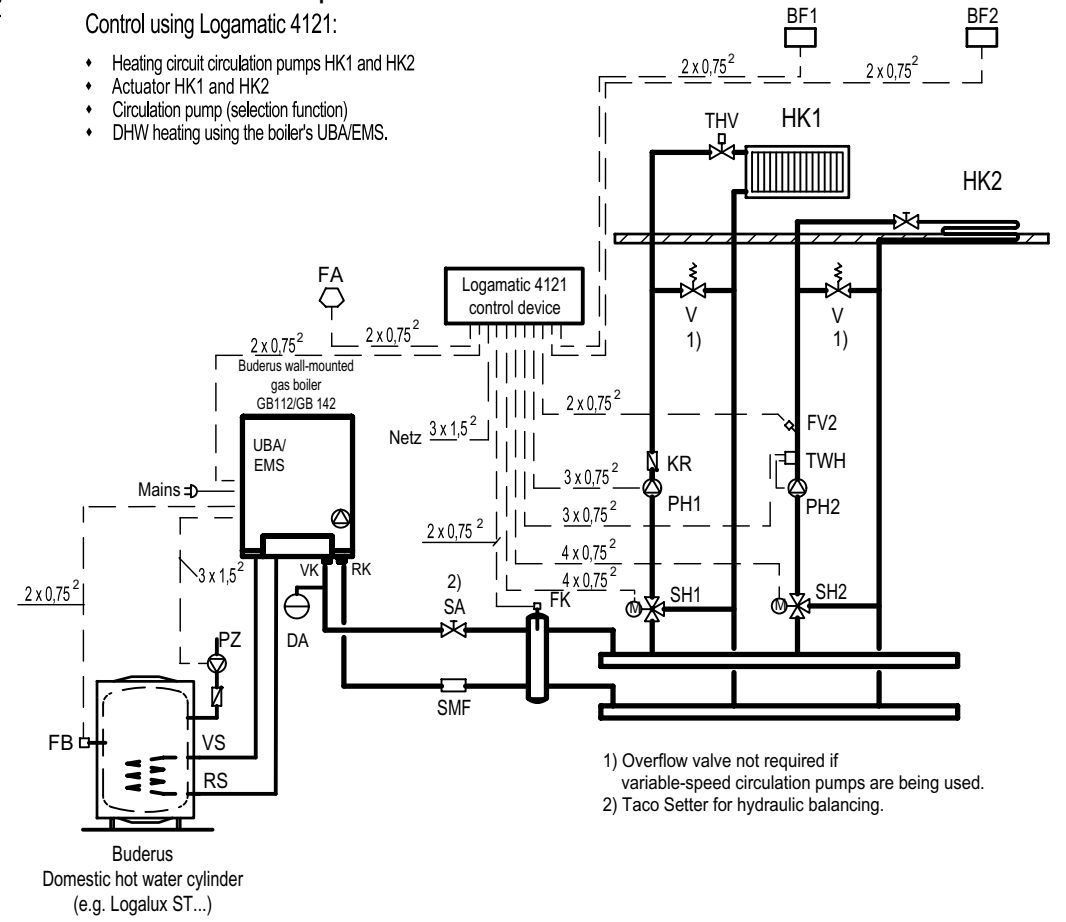
0,4 - 0,75 mm<sup>2</sup>

Mains supply for FM module in slot 2  
L N PE / ~  
Mains 230V 50Hz ~  
max. permissible fuse rating 10 A (s)

### Installation example

Control using Logomatic 4121:

- Heating circuit circulation pumps HK1 and HK2
- Actuator HK1 and HK2
- Circulation pump (selection function)
- DHW heating using the boiler's UBA/EMS.

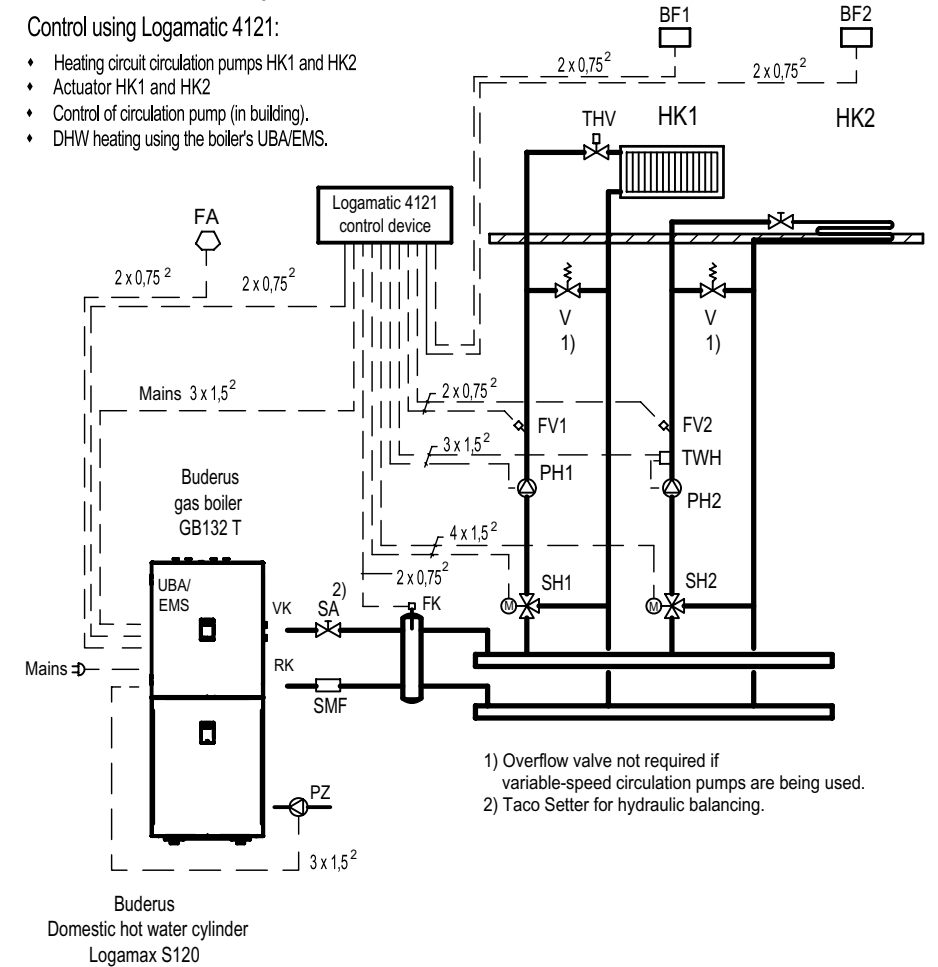


1) Overflow valve not required if variable-speed circulation pumps are being used.  
 2) Taco Setter for hydraulic balancing.

### Installation example

Control using Logomatic 4121:

- Heating circuit circulation pumps HK1 and HK2
- Actuator HK1 and HK2
- Control of circulation pump (in building).
- DHW heating using the boiler's UBA/EMS.



1) Overflow valve not required if variable-speed circulation pumps are being used.  
 2) Taco Setter for hydraulic balancing.

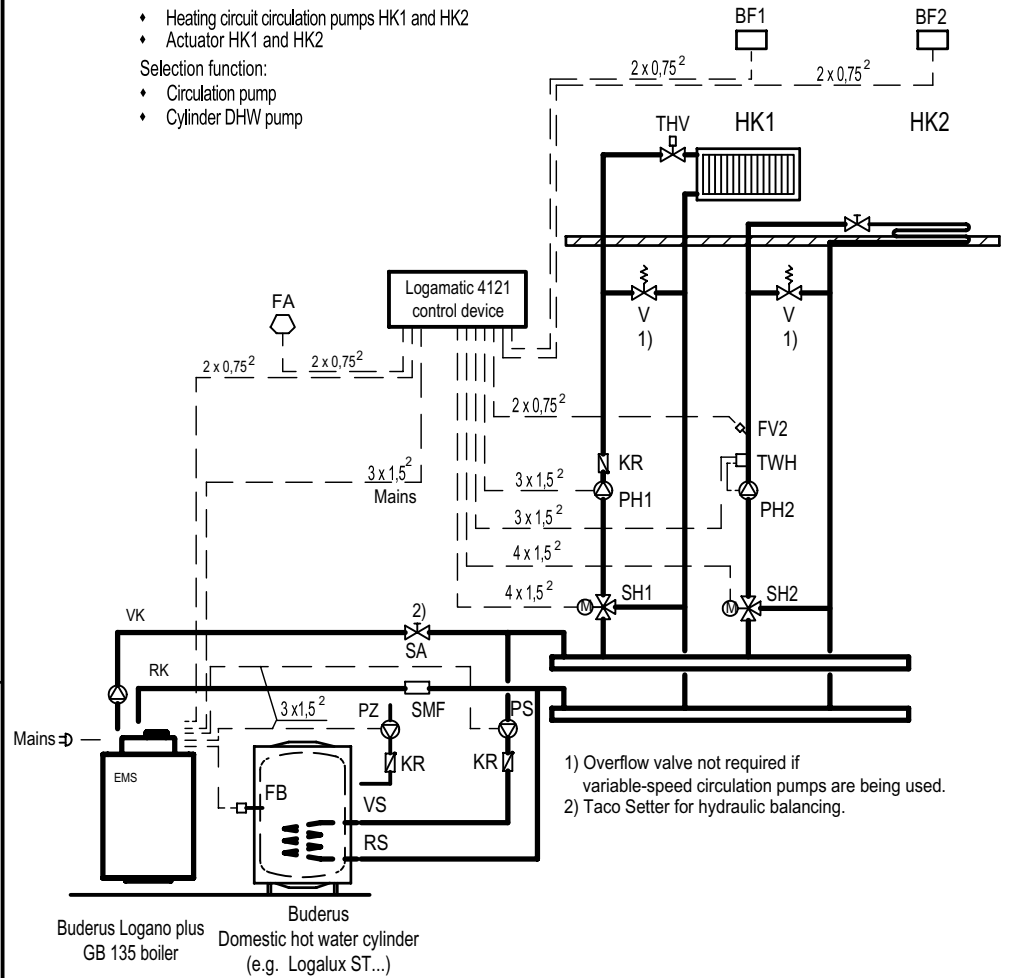
#### Legend:

- BF MEC2 or BFU remote control
- DA Membrane expansion vessel
- FA Outside temperature sensor
- FB DHW temperature sensor
- FK Boiler water temperature sensor
- FV Flow temperature sensor
- HK Heating circuit
- KR Check valve
- PH Heating circuit circulation pump
- PS Cylinder DHW pump
- PZ Circulation pump
- RK Boiler return
- RS Cylinder return
- SA Section regulating and shut-off valve
- SH Heating circuit actuator (mixer)
- SMF Dirt filter
- THV Thermostatic radiator valve
- TWH Heating circuit temperature monitor
- VK Boiler flow
- VS Cylinder flow
- ÜV Overflow valve
- UBA Universal burner control for Buderus wall-mounted gas boilers
- EMS Energy Management System for Buderus boilers

### Installation example

Control using Logomatic 4121:

- Heating circuit circulation pumps HK1 and HK2
  - Actuator HK1 and HK2
- Selection function:
- Circulation pump
  - Cylinder DHW pump

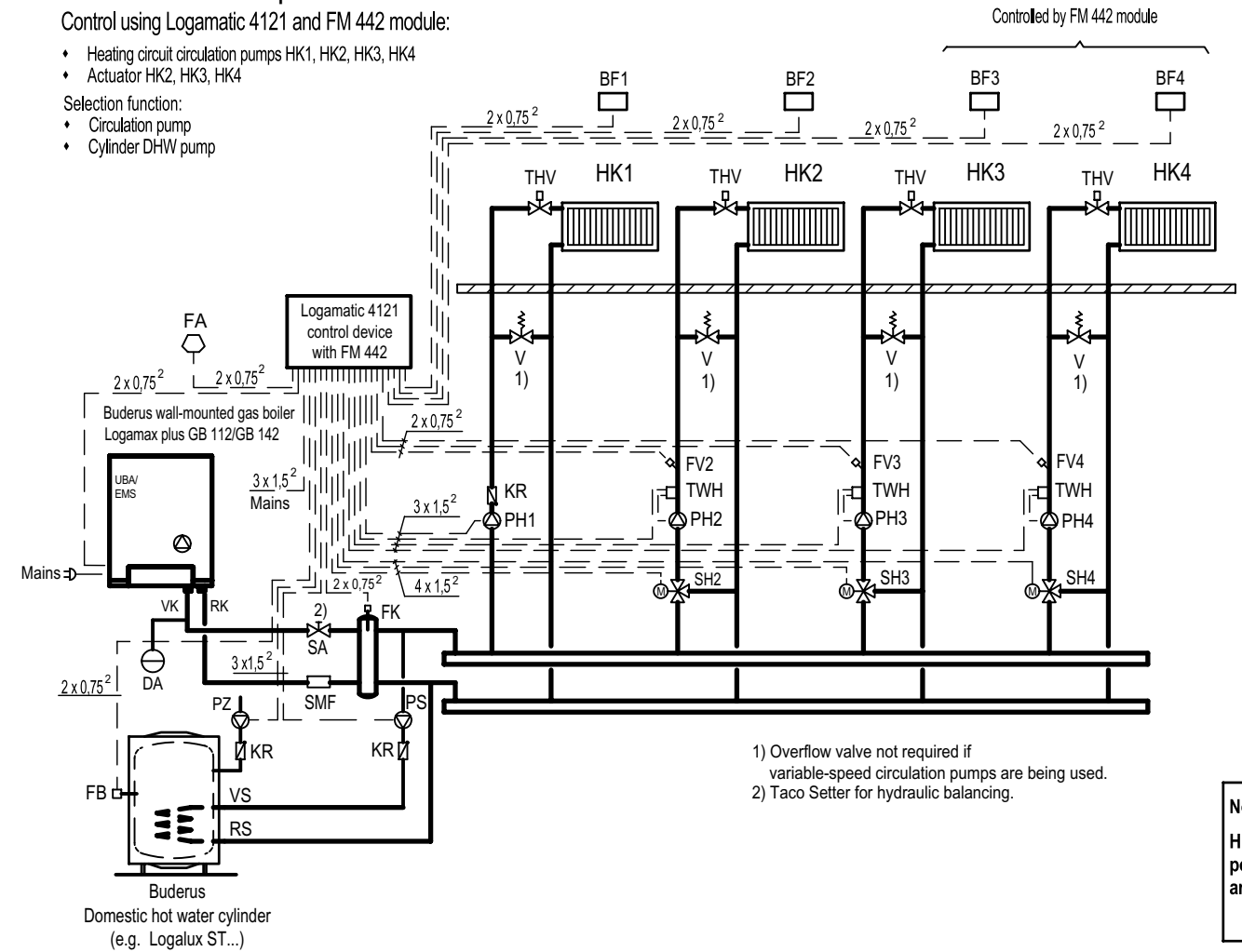


1) Overflow valve not required if variable-speed circulation pumps are being used.  
 2) Taco Setter for hydraulic balancing.

### Installation example

Control using Logomatic 4121 and FM 442 module:

- Heating circuit circulation pumps HK1, HK2, HK3, HK4
  - Actuator HK2, HK3, HK4
- Selection function:
- Circulation pump
  - Cylinder DHW pump



1) Overflow valve not required if variable-speed circulation pumps are being used.  
 2) Taco Setter for hydraulic balancing.

**Note:**  
 HK1 with a mixer is possible if PS and PZ are connected to the boiler.