

TECHNICAL BULLETIN

PRODUCT: BUDERUS RC35

Buderus RC35 UPDATE V.21.06:

The RC35 has been updated to a new software version from 15/7/09, although existing stocks will be used up first. The new part number will be 8-718-573-121. The version for the UK continues to be *3.

The new version can be identified from the date code;

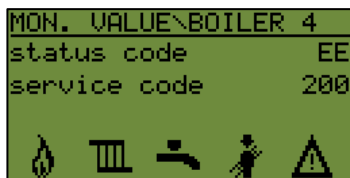


Fig. 1: identification from date code

The update gives improvements to both the software and the documentation.

The main changes to the software are:

1. Improved functionality with MCM10, allowing better monitoring of the values when RC35 is connected to a cascade. Symbols are used to indicate the individual boiler status;



A B C D E

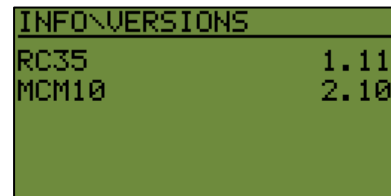
- A. Maintenance (service) or locking error exists
- B. Flue gas test active (is heating in chimney sweep mode)
- C. DHW demand (heating up the DHW system)
- D. Heating demand (central heating mode)
- E. Burner in operation (flame is lit)

No function test of individual boilers is possible via the relay mode in RC35 when connected to an MCM10 (this had led to confusion with the old version).

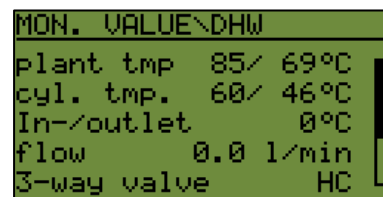
In a fault condition the display will now recognise faults via the MCM10 (not possible before);



This will mean that boiler faults can be read centrally from the RC35.



MCM10 software version can now be read from the RC35



The common flow temperature is displayed in the monitor section as “plant tmp” instead of the normal “boiler tmp”.

The RC35 will also not be able to display the boiler temperature or operating hours in the normal display.

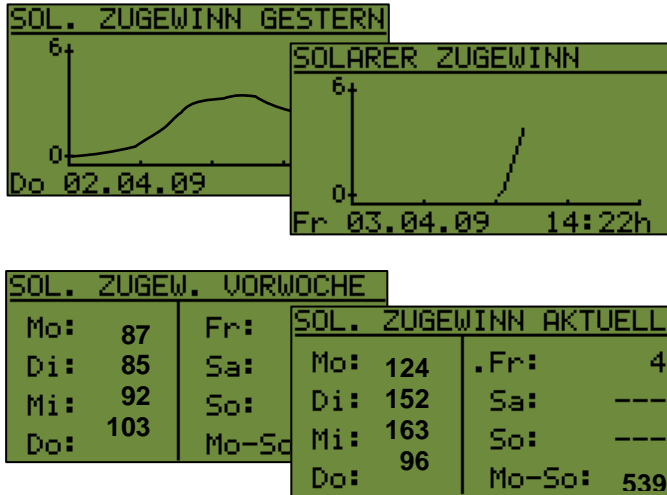
Whilst it is always our intention to fully assist, it is essential to recognise that all information given by the company in response to an enquiry of any nature is provided in good faith and based upon the information provided with the enquiry. We recommend that advice should always be checked with your installer or contract partner. Consequently, the company cannot be held responsible for any liability relating to the use or repetition of such information or part thereof. In addition, whilst making every reasonable effort to monitor the performance and quality of our supply, installation and service network, we do not accept responsibility for the workmanship or operation of any third party company that the company may have promoted either in conversation, e-mail or other communication.

Similarly, the views and opinions expressed in communication with individuals within the company may not reflect that of the business as a whole.

TECHNICAL BULLETIN

PRODUCT: BUDERUS RC35

2. Enhanced display of solar gain which can now show yesterday's performance and represent this in a graph or a table form via the user menu;



3. Changes to the screed drying programme which now allows for a daily increase in flow temperature of up to 40K.

4. Improved functionality with UBA1.5 (Buderus 800) which now allows more menu options to be set and gives better control of the burner modulation.

5. Improved technical documentation explaining the new functions and addressing some of the issues.

6. Computer simulation now available to help with familiarisation of the new functions.

Other minor changes have been made which are unlikely to be useful to UK systems.